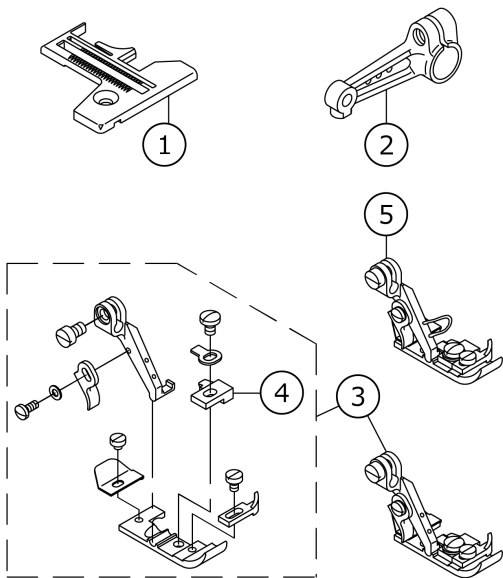


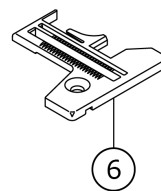
MOC-3900 SUBCLASSES

MOC-3900 SUBCLASSES (1)

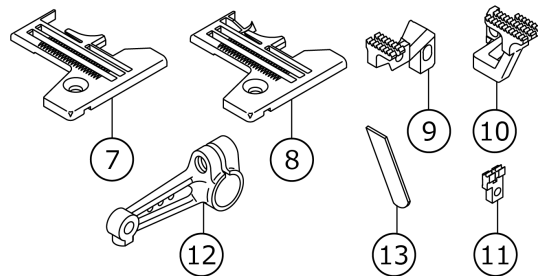
1.MOC-3904-0F4-307



2.MOC-3904-0D4-300



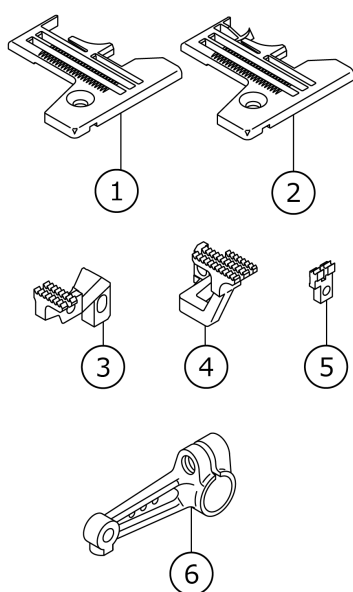
3.MOC-3904-0D6-307



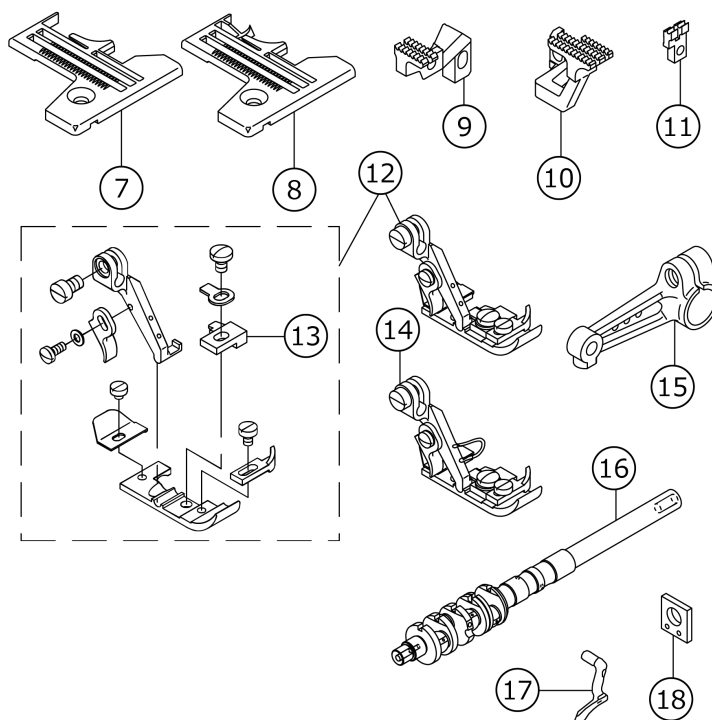
No.	品番	品名	備考	子部品	消耗品	個数
1	R4200K0FD00	THROAT PLATE				1.00
2	12214607	UPPER LOOPER ARM D				1.00
3	12230454	PRESSER FOOT ASM.				1.00
4	B1509804C0A	STITCH TONGUE		*		1.00
5	12230462	PRESSER FOOT ASM.	FOR EXPORT USE			1.00
6	R4200K0DD00	THROAT PLATE				1.00
7	R4300K0DE00	THROAT PLATE				1.00
8	R4300K0DE0A	THROAT PLATE	P01/Q01 EXCHANGING PARTS			1.00
9	12235206	MAIN FEED DOG				1.00
10	12236709	DIFFERENTIAL FEED DOG				1.00
11	12238200	AUXILIARY FEED DOG	P01/Q01 EXCHANGING PARTS			1.00
12	12214607	UPPER LOOPER ARM D				1.00
13	12220406	LOWER KNIFE				1.00

MOC-3900 SUBCLASSES (2)

4.MOC-3904-0E6-307



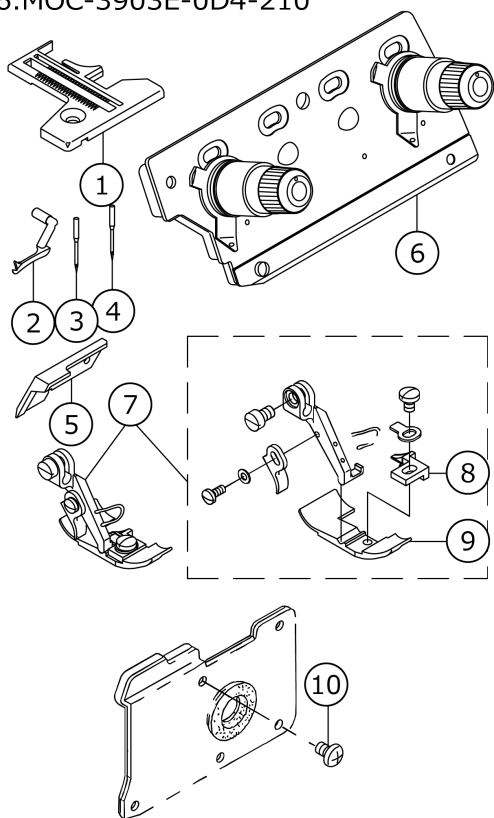
5.MOC-3904-0F6-40H



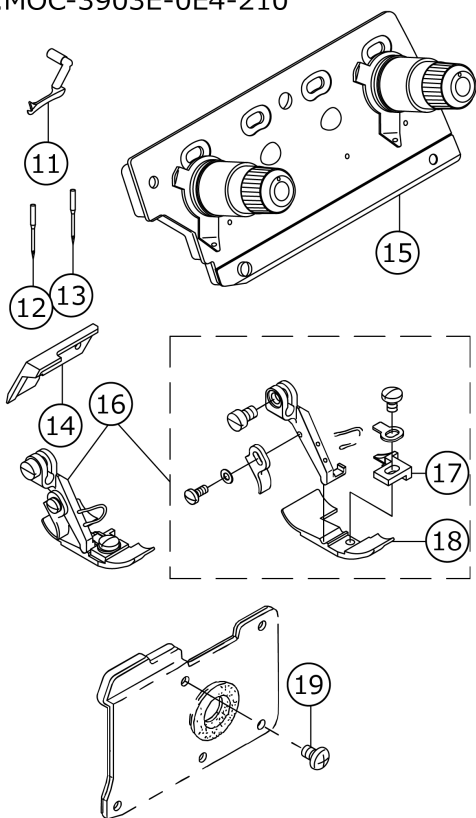
No.	品番	品名	備考	子部品	消耗品	個数
1	R4300K0EE00	THROAT PLATE				1.00
2	R4300K0EE0A	THROAT PLATE	P02/Q01 EXCHANGING PARTS			1.00
3	12235206	MAIN FEED DOG				1.00
4	12236709	DIFFERENTIAL FEED DOG				1.00
5	12238200	AUXILIARY FEED DOG	P02/Q01 EXCHANGING PARTS			1.00
6	12214607	UPPER LOOPER ARM D				1.00
7	R4300K0FE00	THROAT PLATE				1.00
8	R4300K0FE0A	THROAT PLATE	P03/Q01 EXCHANGING PARTS			1.00
9	12235206	MAIN FEED DOG				1.00
10	12236709	DIFFERENTIAL FEED DOG				1.00
11	12238200	AUXILIARY FEED DOG	P03/Q01 EXCHANGING PARTS			1.00
12	12230454	PRESSER FOOT ASM.				1.00
13	B1509804C0A	STITCH TONGUE		*		1.00
14	12230462	PRESSER FOOT ASM.	FOR EXPORT USE			1.00
15	12214607	UPPER LOOPER ARM D				1.00
16	12203709	MAIN SHAFT				1.00
17	12247102	UPPER LOOPER				1.00
18	11893609	GAUGE				1.00

MOC-3900 SUBCLASSES (3)

6.MOC-3903E-0D4-210



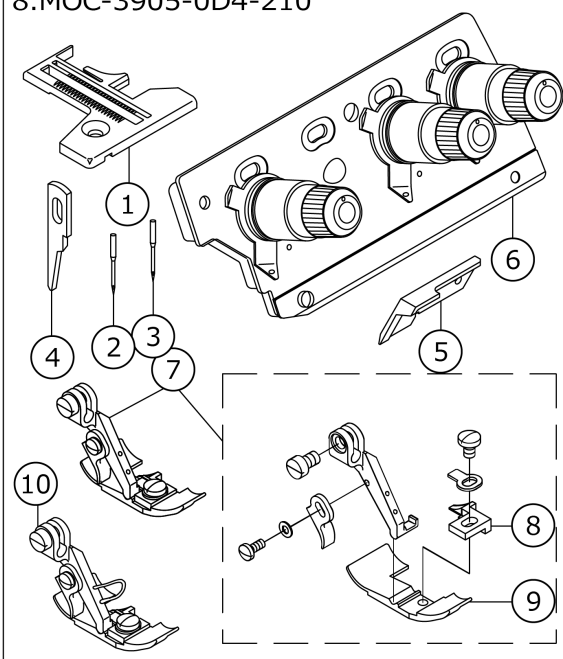
7.MOC-3903E-0E4-210



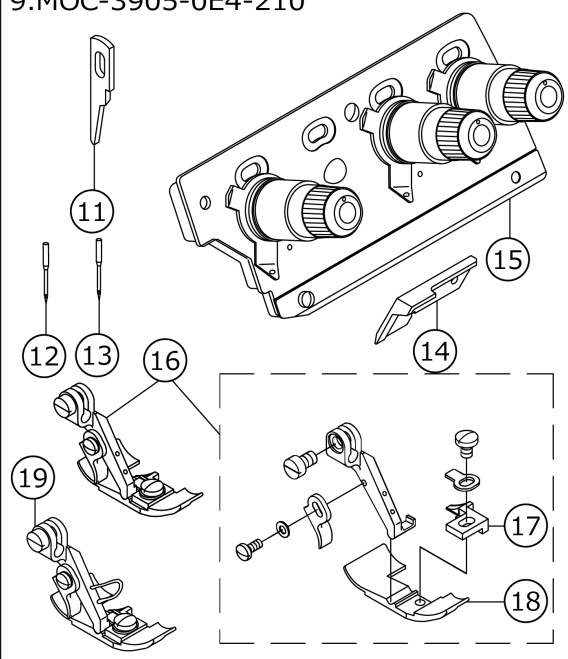
No.	品番	品名	備考	子部品	消耗品	個数
1	R4200K0DD00	THROAT PLATE				1.00
2	12247508	UPPER LOOPER				1.00
3	MDC270B0900	NEEDLE DCX27 #9				1.00
4	MC033600650	NEEDLE B-27 65	FOR JE			1.00
5	11845906	UPPER KNIFE				1.00
6	12180360	THREAD GUIDE PLATE ASM.				1.00
7	11992161	PRESSER FOOT ASM.				1.00
8	11874807	STITCH TONGUE		*		1.00
9	11992104	PRESSER FOOT		*		1.00
10	SM4040655SP	SCREW				1.00
11	12247508	UPPER LOOPER				1.00
12	MDC270B0900	NEEDLE DCX27 #9				1.00
13	MC033600650	NEEDLE B-27 65	FOR JE			1.00
14	11845906	UPPER KNIFE				1.00
15	12180360	THREAD GUIDE PLATE ASM.				1.00
16	11992161	PRESSER FOOT ASM.				1.00
17	11874807	STITCH TONGUE		*		1.00
18	11992104	PRESSER FOOT		*		1.00
19	SM4040655SP	SCREW				1.00

MOC-3900 SUBCLASSES (4)

8.MOC-3905-0D4-210



9.MOC-3905-0E4-210



No.	品番	品名	備考	子部品	消耗品	個数
1	R4200KODD00	THROAT PLATE				1.00
2	MDC270B0900	NEEDLE DCX27 #9				1.00
3	MC033600650	NEEDLE B-27 65	FOR JE			1.00
4	11845708	KNIFE				1.00
5	11845906	UPPER KNIFE	FOR EXPORT USE			1.00
6	12180568	THREAD GUIDE PLATE ASM.				1.00
7	11992153	PRESSER FOOT ASM.				1.00
8	11874807	STITCH TONGUE		*		1.00
9	11992104	PRESSER FOOT		*		1.00
10	11992161	PRESSER FOOT ASM.	FOR EXPORT USE			1.00
11	11845708	KNIFE				1.00
12	MDC270B0900	NEEDLE DCX27 #9				1.00
13	MC033600650	NEEDLE B-27 65	FOR JE			1.00
14	11845906	UPPER KNIFE	FOR EXPORT USE			1.00
15	12180568	THREAD GUIDE PLATE ASM.				1.00
16	11992153	PRESSER FOOT ASM.				1.00
17	11874807	STITCH TONGUE		*		1.00
18	11992104	PRESSER FOOT		*		1.00
19	11992161	PRESSER FOOT ASM.	FOR EXPORT USE			1.00

HOW TO MAKE USE OF THIS PARTS LIST

- 1.As to "#01" and "#02" refer to the "Note" given at the bottom of the respective pages.
- 2.Codes on the "Qty" column
 - Each numeral indicates the number of parts required.
 - "0.1" and "2.5" indicate the length (in meters) of the respective parts.
- 3.Parentheses mean that the corresponding part is a subpart that constructs an assembly part.
- 4.Dotted lines on the Figures indicate assembly parts.

1. リストページの# 0 1、# 0 2の印は、ページ下の"注記"の説明を参照下さい。
2. 数量欄の数字は、個数を表し、0. 1、2. 5等の数値は、長さ（単位メートル）を表します。
3. 数量欄の（ ）は、組部品を構成している子部品であることを意味します。
4. イラストページの-----枠は、組構成であることを意味します。

Other parts list related to this model.

この機種に関するパーツリストとして下記のパーツリストがあります。

MOC-3904-0E4,MOC-3914-BE6.....Standard model(No.0936-02)

MOC-3904-0E4,MOC-3914-BE6.....標準機種 (No.0936-02)